



SUMMARY OF THE
EWASO LANDSCAPE PLANNING WORKSHOP
JANUARY 25TH – 29TH 2006

EXECUTIVE SUMMARY

The Ewaso Landscape Planning Workshop, held in January 2006, initiated a planning process for collaborative conservation in the Ewaso landscape. Representatives of conservation organisations and local government working in the region, were brought together to define challenges and seek solutions to conservation issues in the landscape using tools for conservation planning developed by the Wildlife Conservation Society. An initial framework for conservation planning was developed. This framework requires additional input from other experts and discussion with other organisations (especially development organisations), but it provides a starting point to review ongoing and planned conservation activities of different organisations in the landscape. Conservation priorities were mapped for four target species (elephant, Grevy's zebra, wild dog and lion) and for all species combined, to identify where the priority areas for conservation over the next 10 years should be, and where conservation is not possible in the Ewaso landscape. The Kipsing/Livestock Marketing Division area of Isiolo District was identified as the greatest priority for conservation in the landscape. Conserving this area will ensure a vital linkage for wildlife between Laikipia and Samburu is retained.

A list and map of ongoing and planned conservation activities by different organisations working in the landscape was developed and compared with the conservation priorities identified by the landscape planning process. The **Ewaso Conservation Group (ECG)** was formed as a means of carrying forward the collaborative process for conservation planning initiated by this workshop. The ECG will provide a forum for consultation and collaboration of conservation organisations in the landscape and take the lead in coordinating activities in order to carry the landscape planning process forward and develop a synergy of partnerships between organisations working in the region. The first meeting of the Steering Committee of the ECG is planned for April 2006.

INTRODUCTION & OBJECTIVES

In January 2006, a Landscape Planning Workshop was held at Mpala Research Centre in Laikipia. The workshop came about as a result of a call by many conservation organisations working in the region which recognised that greater conservation success in the ecosystem will come from more open and collaborative working relationships that capitalise on the strengths of each organisation. The workshop was attended by representatives of conservation organisations working in the landscape and facilitated by the Wildlife Conservation Society (WCS). Participating organisations included:

- AWF African Wildlife Foundation
- ENNDA Ewaso Nyiro North Development Authority
- EWI EarthWatch Institute
- KWS Kenya Wildlife Service
- LERP Laikipia Elephant Research Project
- LPP Laikipia Predator Project
- LWC Lewa Wildlife Conservancy
- LWF Laikipia Wildlife Forum
- MRC Mpala Research Centre
- MWF Mpala Wildlife Foundation
- NRT Northern Rangelands Trust
- SCC Samburu County Council
- SLWDP Samburu-Laikipia Wild Dog Project
- STE Save the Elephants
- SWF Samburu Wildlife Forum
- WCS Wildlife Conservation Society

The workshop aimed to initiate a planning process for conservation in the Ewaso landscape, to build on prior conservation efforts and come to consensus on the conservation vision and objectives for the landscape, to prioritise where conservation actions should take place, and identify which actions need to be taken. The workshop also aimed to initiate a collaborative process for taking effective conservation action across the landscape in the long-term.

The biodiversity of the dry-savannah ecosystem of the Ewaso landscape was the focus of this landscape planning process, an area of 52,800km², including Laikipia district, most of Samburu, and part of Isiolo, Marsabit and Meru districts.

LANDSCAPE PLANNING PROCESS

The workshop used WCS' Landscape Planning Approach to help define challenges and seek solutions to conservation issues in the landscape. Conceptual models were used to help conservation organisations think in a structured way about how biodiversity is lost and how it can be conserved, and to come to a consensus about challenges and potential solutions for conservation. Conceptual models were developed separately for biodiversity conservation and human livelihoods. These models explicitly defined the conservation/livelihoods goals and targets, and identified direct and indirect barriers to conservation/livelihoods, which in turn will contribute to defining actions or interventions to overcome or address these barriers.

The common goal for biodiversity conservation was defined as **'to conserve the natural biodiversity and integrity of the Ewaso landscape'**. The group decided upon nine biodiversity targets which would need to be conserved to achieve the overall goal. These were:

- Elephant;
- Grevy's zebra;
- Wild dogs;
- Lions;
- Reticulated giraffe;
- Jackson's hartebeest,
- Dry upland/montane forest;
- Acacia-grassland mosaic;
- Hydrological system.

For each target, the direct and indirect barriers to conservation were identified.

The goal for the human livelihoods was defined as **'secured livelihoods through sustainable management of natural resources, including wildlife, in the Landscape'**. Specific livelihoods targets identified were:

- Wildlife based enterprises;
- Livestock enterprise;
- Education.

Due to time constraints, only barriers for wildlife and livestock enterprises were discussed and issues of population growth, health and empowerment of women were not examined. The group also acknowledged that they lacked sufficient expertise to develop a realistic livelihoods model and development organisations need to be included in further discussions and planning of livelihoods in the landscape.

A brief comparison of the biodiversity and livelihoods models highlighted that several barriers were similar between the two models. This suggests that concentrating effort on finding interventions/opportunities to reduce these barriers may be a strategic choice. Common barriers were:

- Lack of wildlife or declining populations of wildlife;
- Lack of or inappropriate land-use planning, or land-tenure not conducive to development or conservation;
- Lack of security, law enforcement or management;
- Lack of enforcement of water policy/regulations;
- Lack of alternative investment opportunities or poor integration of livestock into cash economy.

Participants then mapped the spatial priorities for conservation in the landscape, focusing on four target species, elephant, Grevy's zebra, wild dog and lion. By mapping conservation priorities, conservation organisations can better identify where resources and time should be invested, what activities are appropriate, where information is missing and where they can collaborate and avoid overlap. These mapping exercises help participants reach consensus about where to focus conservation in the landscape over the next 10 years and where the priority areas are to invest time/money first.

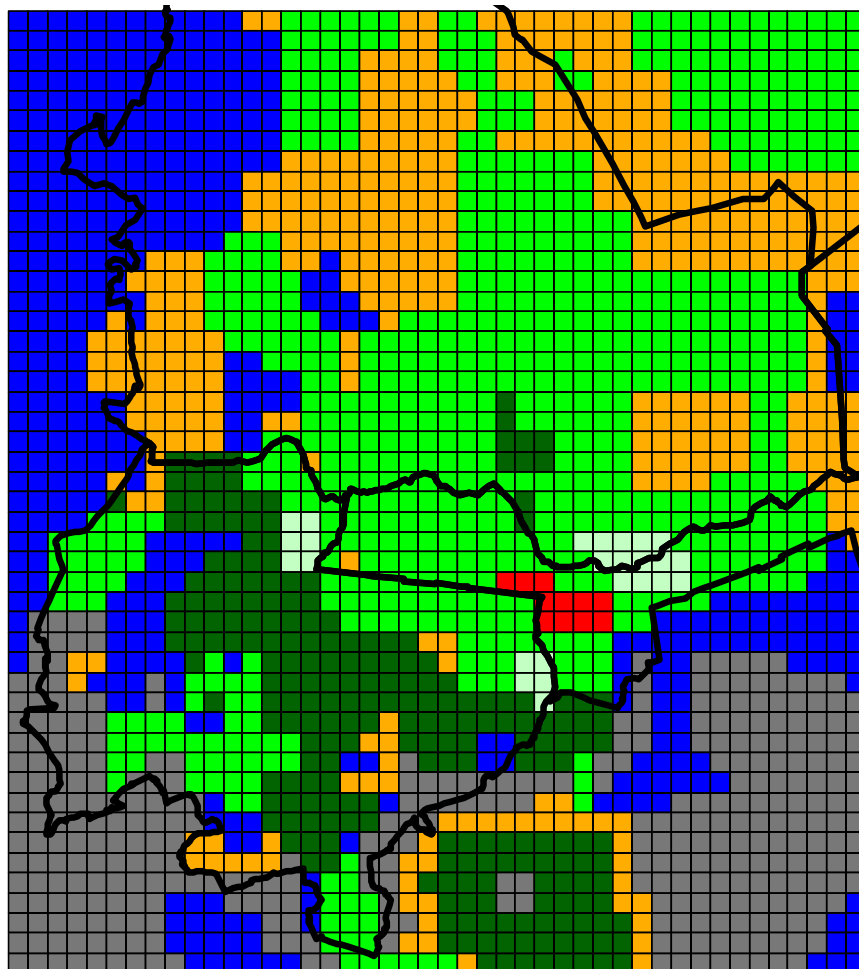
Five maps for each species were developed: current importance, potential for loss, potential for recovery, conservation costs, and confidence. Using these maps a Cost/Benefit analysis map for each species was produced, which provides a spatial interpretation of the benefits of conservation relative to the costs of conservation across the landscape. After discussion and review of each of the maps produced, a map of conservation priorities for each species was developed. Individual species maps were then combined to produce an overall conservation priority map for all species.

The outcome of the combined conservation priorities map was very interesting (Figure 1), most important points to highlight from this map are:

- Mt. Kenya National Park, most of the commercial ranches in Laikipia, Lewa Wildlife Conservancy, and a small area in Samburu around West Gate and Wamba are considered **high priority areas that require no increased investment** (i.e. conservation should continue at the current rate of investment/effort);
- Solio, Laikipia Ranching, Naibunga Conservancy, parts of south-western Laikipia, elephant corridors between Ngare Ndare forest to Mt. Kenya and Solio to Mt. Kenya, much of Samburu including the Kirisia Forest, Matthew’s Ranges, Shaba, Sera, west of the Reserves along the Ewaso Nyiro river and the north-eastern part of the Landscape in Marsabit district are **high priority areas that require increased investment**;
- Livestock Marketing Division, Kipsing and Ol Donyiro in the portion of Isiolo district that bisects Laikipia and Samburu districts, were identified as a **high priority needing additional investment**.
- The area west of Buffalo Springs Reserve and east of Lekurruki in Isiolo district emerged as a **HOTSPOT: high priority requiring additional investment for all four species**.

On the basis of the conservation priority map and on previous experience, the **HOTSPOT** emerged as the greatest priority for conservation in the landscape since it threatens vital linkages between two important wildlife areas.

Figure 1: Integrated conservation priority map for Wild Dog, Lions, Elephants and Grevy’s Zebra



Landscape Conservation Priorities For Grevy's Zebra, Lions, Elephants, and Wild Dogs

- 1 Conservation of All Species Not Possible
- 1 Low or Info Needed for Everyone
- 5 Medium for at least 1, not high for anyone
- 9 High Priority, Increased Investment Needed for at least 1
- 10 High Priority, Nobody except Wild Dog needs increased investment
- 13 High Priority, Nobody Needs Increased Investment
- 11 High Priority, Increase Investment for All

COLLABORATIVE PROCESS FOR LANDSCAPE CONSERVATION

An important objective of the workshop was to initiate a collaborative process for effective conservation action across the Ewaso landscape, to follow on from this meeting. It was agreed that effective conservation in the long-term will only be possible if it is based on a strong partnership between conservation organisations and County Councils of the three Districts included in the landscape.

A list of ongoing and planned activities of the different conservation organisations in the landscape was developed, and these activities were mapped. This information was used to compare the spatial distribution of ongoing and/or planned activities with the map of priority areas for conservation defined by the mapping exercises. The maps highlighted that activities are limited in those areas identified as a priority for conservation from the mapping exercise, particularly parts of Isiolo and the Livestock Marketing Division. Similarly, although the Northern Matthews range was identified as an important area for conservation, very little activity was ongoing or planned in this area.

Different mechanisms to formalise the collaboration between conservation organisations were discussed and the participants agreed that there was a need for a dedicated organisation/group to take the lead and coordinate activities in order to carry the landscape planning process forward and develop a synergy of partnerships between organisations working in the region.

Participants agreed to form the **EWASO CONSERVATION GROUP (ECG)** as the mechanism to carry the landscape conservation process forward. The ECG will provide a forum for consultation and collaboration of conservation organisations in the landscape; define shared goals and priority actions between members of the ECG; identify other partners with different expertise; and help direct research to answer questions directly relevant to conservation in the landscape. It was agreed that the LWF will initially take on the role of secretariat for the ECG to coordinate meetings and agendas. Membership of the ECG steering committee is being finalised and will comprise up to 10 individuals from the following organisations/sectors:

- **Government** Kenya Wildlife Service
Ewaso Nyiro North Development Authority
- **Local Government** Samburu, Laikipia, Isiolo County Councils
- **Private/Community** Laikipia Wildlife Forum
Samburu Wildlife Forum
Livestock Marketing Association
Northern Rangelands Trust
- **Research** Mpala Research Centre
Save the Elephants
Centre for Training and Integrated Research in ASAL Development
EarthWatch Institute
- **NGO (conservation)** African Wildlife Foundation

The first meeting of the steering committee of the ECG is planned for early April 2006 during which roles and responsibilities of the ECG will be clarified in a draft charter and a Chairman for the group will be elected.